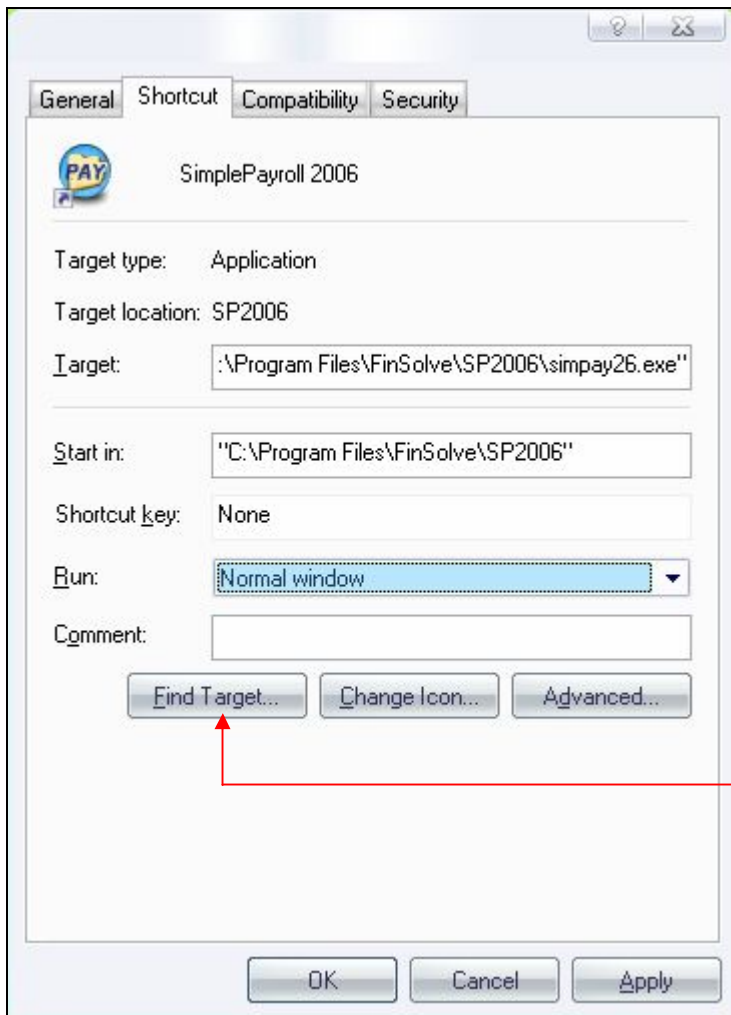


### How to run a FinSolve product via the network

\* Products not applicable to: **FinSolveCGT**

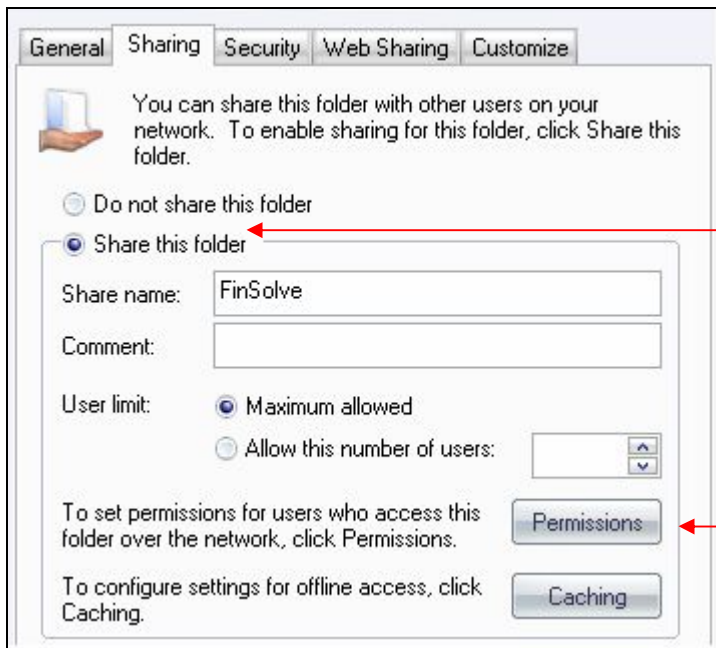
#### **Part A (Sharing the Directory)**

1. The first step is to set the sharing rights for the particular FinSolve product. [Part A is completed at the pc where the FinSolve product is installed](#)
2. This is accomplished by right clicking on the applicable FinSolve product desktop icon and choosing the 'Properties' menu option
3. Click the 'Find Target' button

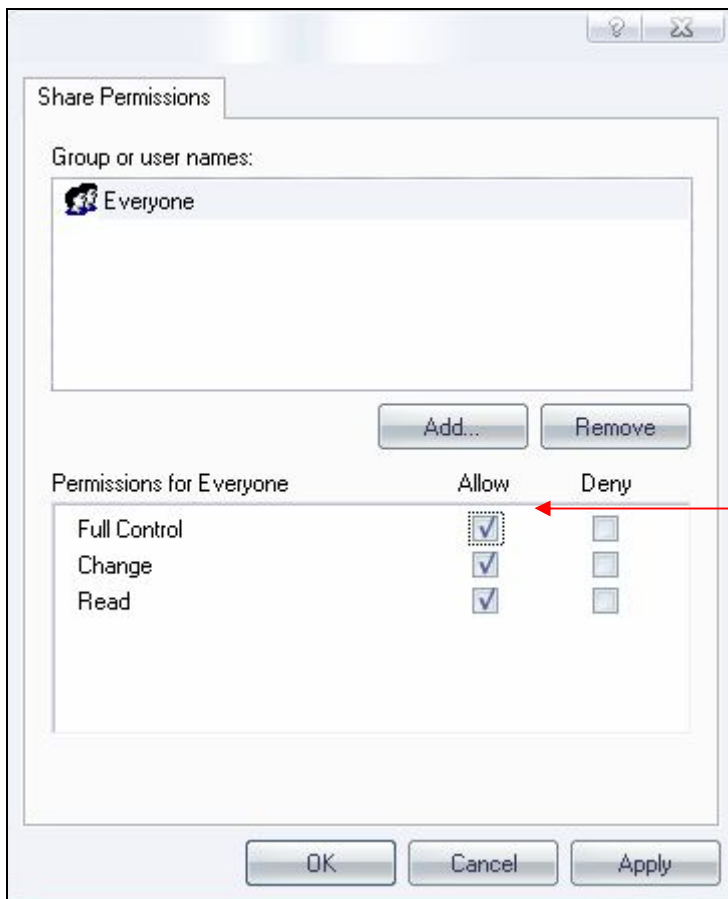


4. Push the 'Backspace' button twice on your keyboard
5. You will now be able to see the FinSolve product directory
6. Right click on the directory and choose 'Sharing and Security'

7. Click 'Share this folder' and then click the 'Permissions' button

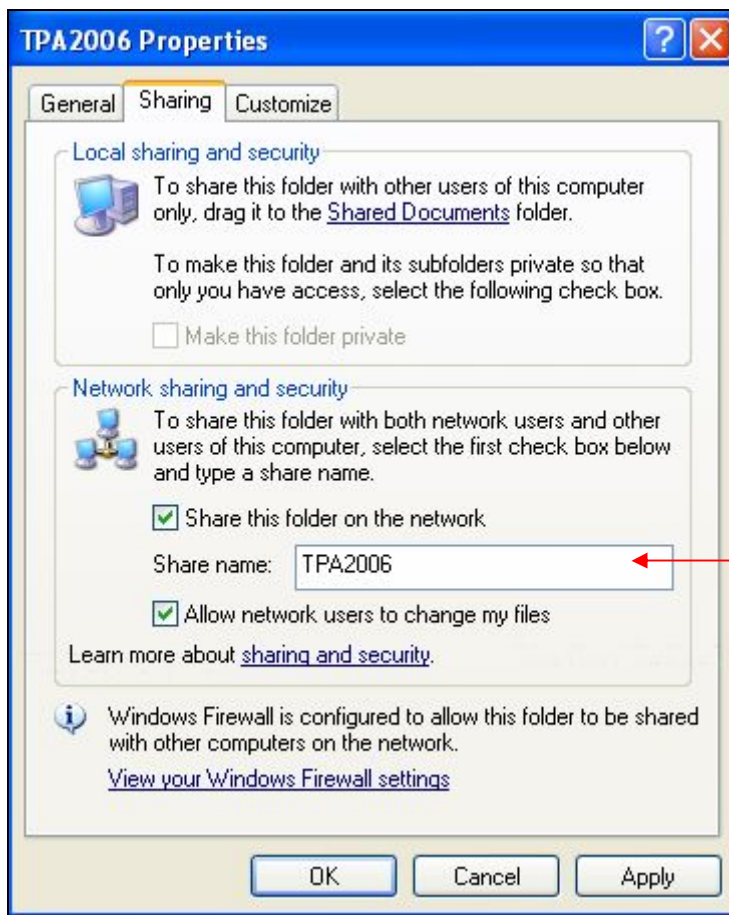


8. Make sure that 'Full Control' is allocated to the directory



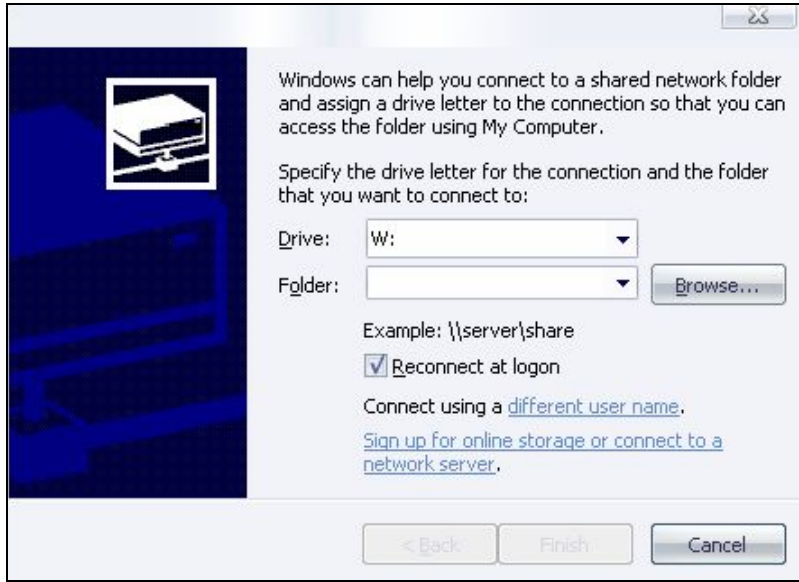
9. Click 'Apply'

10. If your sharing screen appears as below then click 'Share this folder on the network' and make sure to also check 'Allow network users to change my files'



## Part B (Mapping a drive)

1. This is the second part to running a FinSolve Product via the network. [This part is completed at the workstation that requires the usage of the FinSolve product](#)
2. Double click 'My Computer' and choose the top menu option 'Tools'
3. Choose 'Map Network Drive'
4. Windows will automatically assign an open Drive letter
5. Click the Browse button and navigate to the pc where the FinSolve product is installed. You will locate the directory under the pc where it has been shared eg: \\server01\FinSolve etc



6. Click the FinSolve directory and click 'OK'
7. Click the 'Finish' button
8. The mapped directory will now open
9. Double click the applicable directory eg. SP2006 for SimplePayroll 2006 and TPA2006 for TaxPlanner 2006 etc
10. Right click on the application file (eg. simpay26.exe, tpa2006.exe) and choose Send To Desktop (create shortcut)
11. You can now open the FinSolve product from the shortcut created on your desktop
12. If you receive any license error messages then please make sure that your Windows date and time are correct. NB – make sure that your Time Zone is set to (GMT+02:00) Harare, Pretoria

